

Troubleshooting

Blower Motor

Blower motor does not run at all.

First check for blown fuse.
No. 37 (40A)
No. 19 (7.5A)
No. 35 (50A)

Are fuses OK?

NO

Replace blown fuse(s).

YES

Disconnect the connector from the blower relay mounted on the side of the blower.

Measure voltage between the BLU/WHT wire terminal (+) and body ground (-).

Is there battery voltage?

NO

Repair open in BLU/WHT wire between the NO. 37 (40 A) fuse and blower relay.

YES

Turn the ignition switch ON.

Measure voltage between the BLK/YEL wire terminal (+) and body ground (-).

Is there battery voltage?

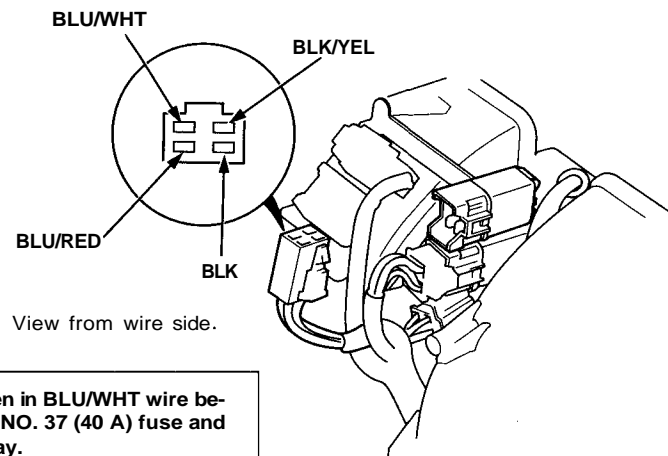
NO

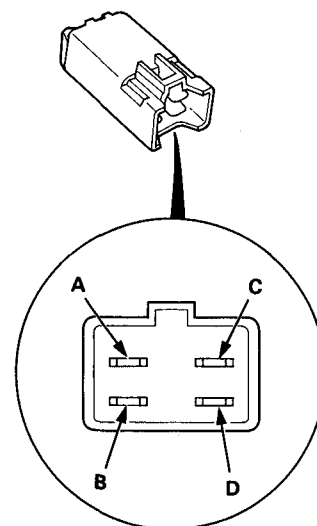
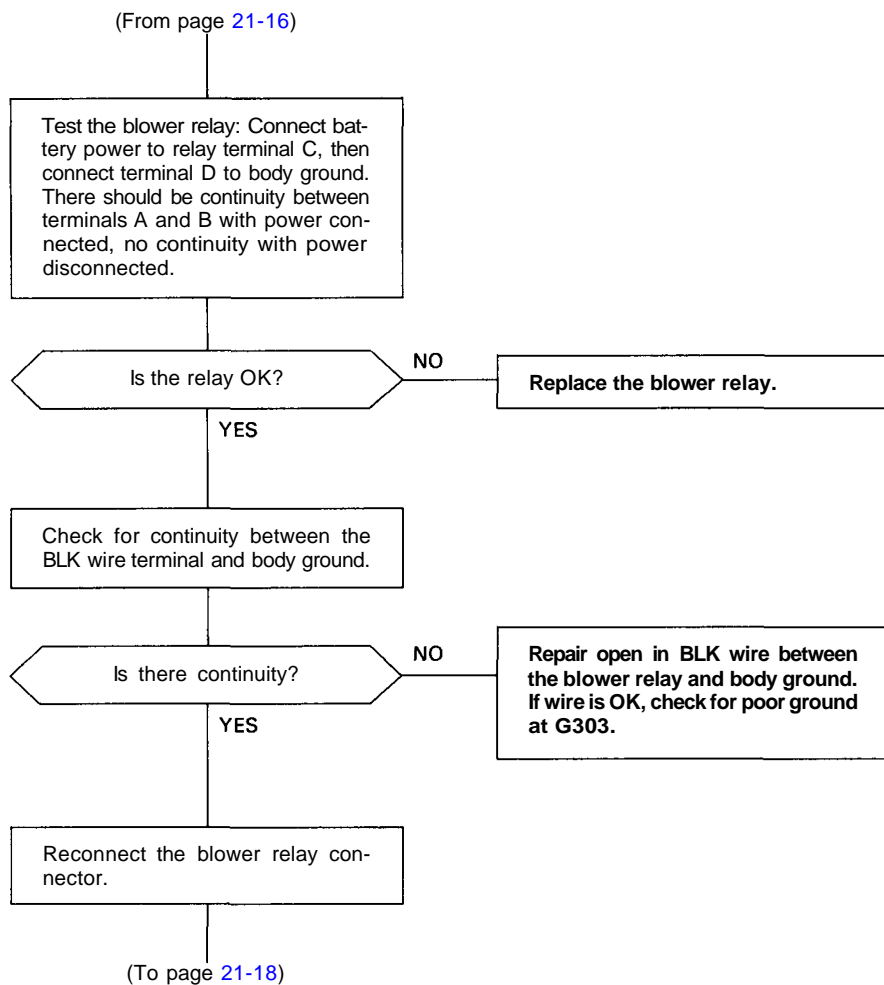
Repair open in BLK/YEL wire between blower relay and No. 19 (7.5A) fuse.

YES

Turn the ignition switch OFF.

(To page 21-17)





(cont'd)

Troubleshooting

Blower Motor (cont'd)

(From page 21-17)

Disconnect the 2-P connector from the blower motor.

Turn the ignition switch ON.

Measure voltage between the BLU/RED wire terminal (+) and body ground (-).

Is there battery voltage?

NO

Repair open in BLU/RED wire between blower motor and blower relay.

YES

Turn the ignition switch OFF.

Inspect the blower motor. Connect the battery positive to the BLU/RED wire terminal and negative to the BLU/BLK wire terminal.

Does the blower motor run.

NO

Replace the blower motor.

YES

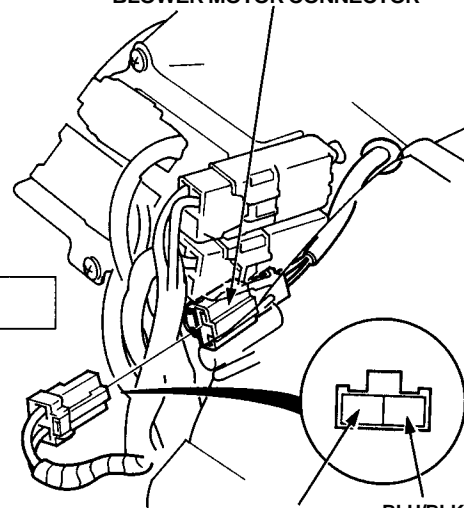
Reconnect the connector to the blower motor.

Disconnect the connector from the blower HIGH relay mounted on the side of the blower.

Connect a jumper wire between the BLU/BLK wire terminal and body ground.

(To page 21-19)

BLOWER MOTOR CONNECTOR

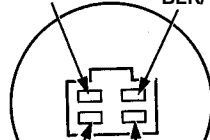


BLU/WHT BLU/BLK

View from wire side

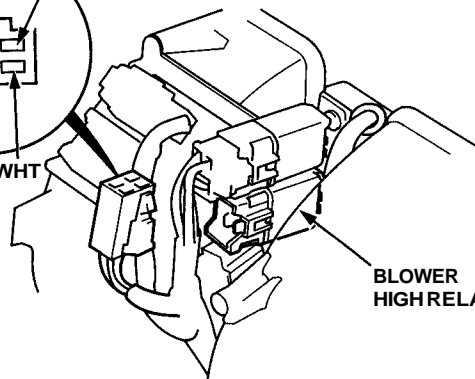
View from wire side

BLU/BLK BLK/YEL

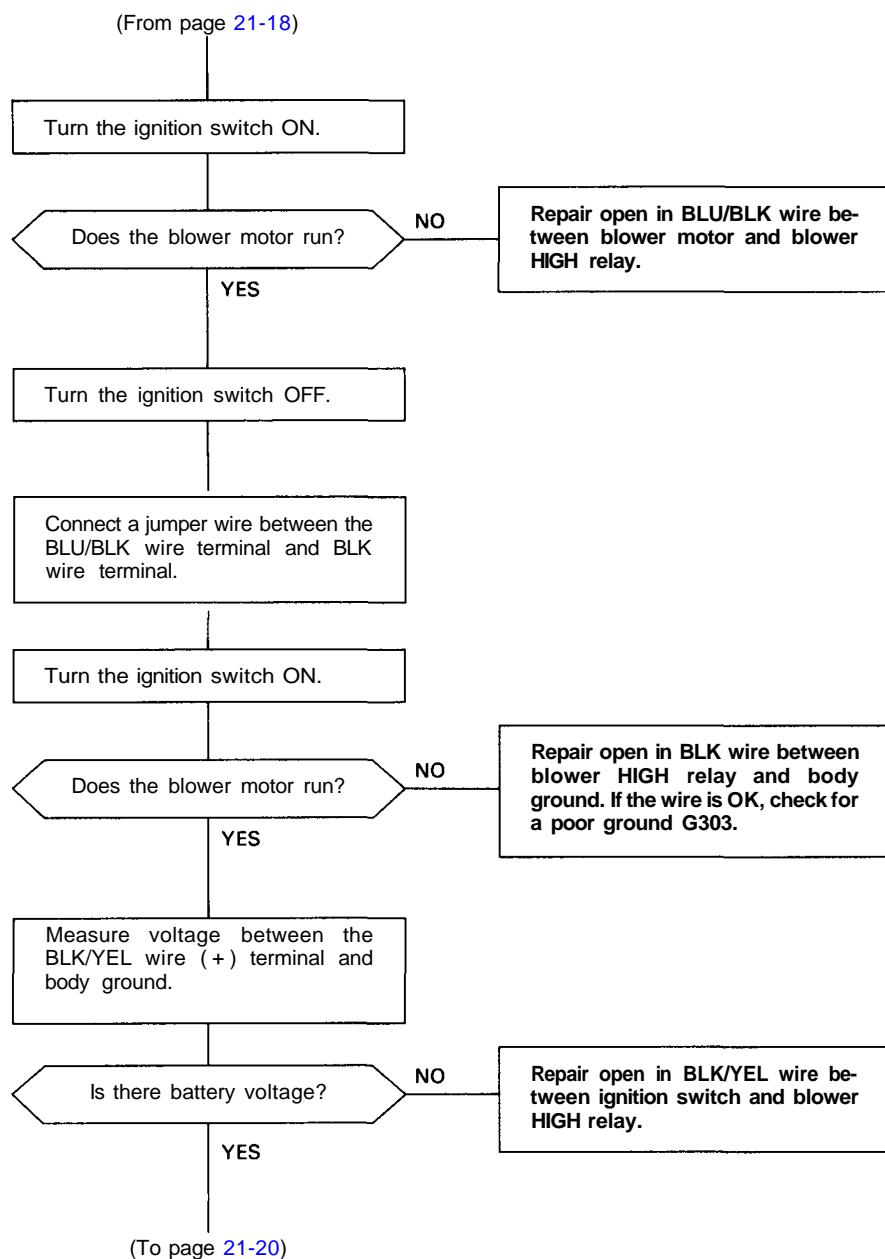


ORN/WHT

BLK



BLOWER HIGH RELAY



(cont'd)

Troubleshooting

Blower Motor (cont'd)

(From page 21-19)

Turn the ignition switch OFF.

Test the blower HIGH relay: Connect battery power to relay terminal C, then connect terminal D to body ground. There should be continuity between terminals A and B with power connected, no continuity with power disconnected.

Is the relay OK?

NO

Replace the blower HIGH relay.

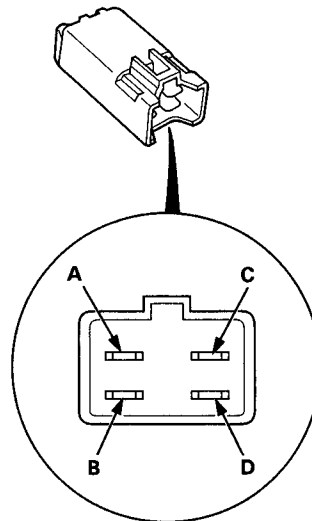
YES

Reconnect the blower HIGH relay.

Remove the control unit (page 21-13).

Disconnect the 22-P connector from the control unit.

(To page 21-21)





(From page 21-20)

Connect a jumper wire between the No. 14 (ORN/WHT) wire terminal and body ground.

Turn the ignition switch ON.

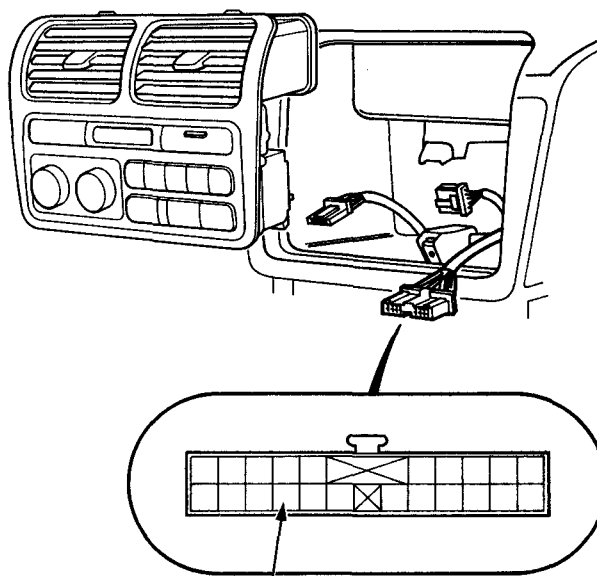
Does the blower motor run?

NO

Repair open in ORN/WHT wire between blower HIGH relay and climate control unit.

YES

Substitute a known-good control unit and recheck.
If symptom/indication goes away, replace the original control unit.



No. 14 (ORN/WHT)

View from wire side